

MODEL FP2000



FRESCAPURE™

FILTERED SHOWER SYSTEM

USE & CARE MANUAL



System Tested and Certified by NSF International against NSF/ANSI Standard 42 for the reduction of Chlorine Taste and Odor, nominal particulate Class I and NSF/ANSI Standard 53 for the reduction of Cysts, Lead, VOC, Turbidity and MTBE.

Questions or Comments: 1-800-279-3373
8am-5pm Central Standard Time

IMPORTANT: Read and Save these Instructions

INTRODUCTION

Congratulations on the purchase of your new FrescaPure™ Filtered Shower System! You have taken an important step towards improving the quality of your shower water.

This System significantly reduces free available chlorine from you shower. Don't be too surprised when you realize just how much your shower experience is noticeably improved!

You may notice that you breath easier, consume less soap and hair conditioner, and find that your hair and skin are just naturally soft to the touch! What's more, common skin conditions that are created from chlorine irritation such as rash, flaking, itching and dryness virtually disappear!

FrescaPure™ Filtered Shower Systems are so advanced that soap residue and build up on glass and tiled surfaces are greatly reduced. You have made a wise investment. Now, please take a few additional minutes to complete reading this manual, so that you may realize all the benefits your new FrescaPure™ Filtered Shower System has to offer!

IMPORTANT USE GUIDELINES

1. For this System to continue to perform as tested and represented, use only Genuine Royal Prestige Replacement Cartridges. Replacement Cartridges may be purchased from your Independent Royal Prestige Representative, for purchase information you may also call the Royal Prestige Customer Service Center at 1-800-279-3373.
2. The actual capacity of your Cartridge may vary from the rated capacity. This may be due to the volume of contaminants actually present in your water supply. Replace the Cartridge upon the first occurrence of the following:
 - Every three months
 - When the flow rate diminishes
 - When you notice an odor reoccurrence
 - When the rated capacity of the Cartridge has been reached
3. Read the manual completely before attempting to install or use this product.
4. For use on cold potable water supplies only.
5. Installation of this product must comply with all state and local laws and regulations. Refer to your local agencies for details.
6. The contaminants or other substances removed or reduced by this System are not necessarily in all user's water.



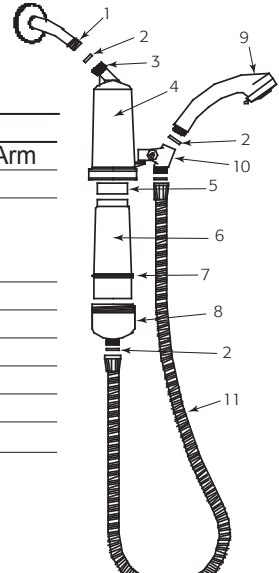
OPERATING SPECIFICATIONS

Installation	Shower
EPA Establishment Number	63018-NV-001
Rated Capacity	10,000 gallons (U.S.)
Replacement Cartridge	RC-20-FP
Approximate Flow Rate @ 80 psi	2.5 gal/min
Housing Construction	High Impact Plated ABS
Maximum Working Pressure	100 PSIG (689.5 kPa)
Maximum Operating Temperature	160° F /71° C
Minimum Operating Temperature	34° F/1° C

REPLACEMENT PARTS DIRECTORY

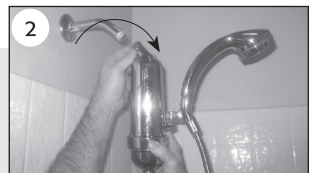
FRESCAPURE™ SHOWER FILTER

ITEM	PART NO.	DESCRIPTION
1	N/A	Existing Shower Arm
2	4-301-0007	Gasket
3	3-201-0007	Nut
4	4-101-0017	Filter housing
5	4-500-0020	Pre-filter
6	0010-10-01	Cartridge
7	4-401-0030	O-Ring
8	4-101-0018	Filter Base
9	0010-10-05	Shower Wand
10	3-501-0020	Swivel
11	0010-06-04	Hose



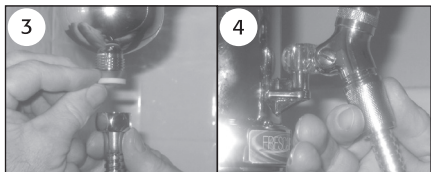
SET UP AND INSTALLATION

1. Remove the existing shower head from your existing shower arm by turning counter-clockwise.
2. Insert Gasket into Collar located on Filter Housing. Thread Collar clockwise directly onto existing shower arm until tight. Do Not Over-Tighten.

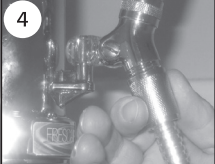


CAUTION: Threads from shower arm may cut Gasket if improperly installed. This may result in leakage around the Collar. If leak persists, use Teflon tape which is provided. Wrap Teflon tape around threads on existing shower arm 1½ times. Re-thread Collar clockwise directly onto existing shower arm until tight. Do not over-tighten.





3. Insert Gasket into Hose End and thread clockwise onto Filter Base.



4. Insert Gasket into remaining Hose End and and thread clockwise onto Swivel.



5. Insert Gasket into Swivel and thread Shower Wand clockwise into Swivel.



6. Turn Cold water "On" and lower the Shower Wand into tub and direct at drain. Once filtered water is clear inspect System for leaks at connections.

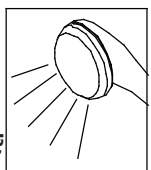
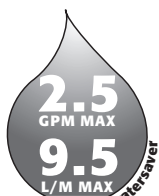
IMPORTANT: While continuing to hold Shower Wand in the direction of the tub drain, allow some time for water to begin entering the Filter Housing. When using your System for the first time, allow the System to flush directly into the drain until the filtered water clears. This will remove any fine, black carbon particles left over from the manufacturing process, expel trapped air, and condition the Cartridge for normal use. This procedure should be repeated each time a new Cartridge is installed.

7. Inspect System for leaks at connections (*if leak is detected refer to the Caution statement located in the Set-Up and Installation section of this manual*).

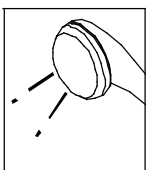
8. Turn shower "off" and attach the Shower Wand onto Filter housing and align.

Congratulations! Your new FrescaPure™ Filtered Shower System is now ready for use.

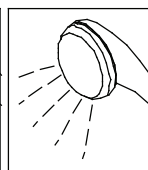
NOTE: Your FrescaPure™ Filtered Shower System is designed with five adjustable spray settings for your enjoyment. To change from one setting to another, simply rotate the Lever located on Shower Wand.



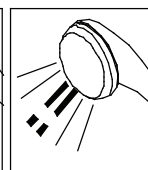
FULL SPRAY



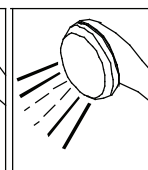
PULSATING
MASSAGE



MIST



MASSAGE/
SPARY



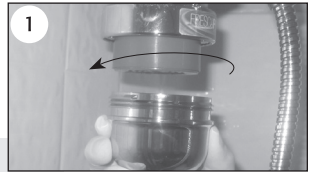
MIST/SPRAY



REPLACING THE CARTRIDGE

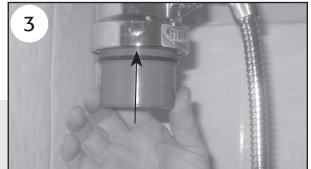
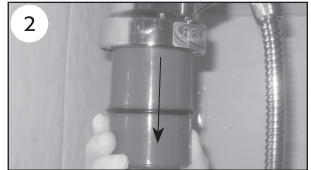
The most important part of maintaining your FrescaPure™ Filtered Shower System is replacing the Cartridge on a regular service interval. To insure that your System continues to perform as tested and represented in the Performance Data Sheet, the Cartridge should be replaced upon the first occurrence of the following: every three (3) months, when the flow rate diminishes, when you notice an odor reoccurrence, or when the rated capacity of the Cartridge has been reached.

1. Remove the Filter Base by turning counterclockwise until it separates from the Filter Housing. As you remove the Filter Base, the Cartridge will remain attached to the Filter Housing.



RECOMMENDATION: Rubber gloves should be worn to avoid direct contact with the contaminants removed by the used cartridge.

2. Pull used Cartridge from Filter Housing and discard with your regular refuse.
3. Remove the sanitary plastic wrap from the new Cartridge. Insert Cartridge into Filter Base and thread clockwise onto Filter Housing until tight. Do Not Over-Tighten.
4. Turn Cold water "On" and lower the Shower Wand into tub and direct at drain.



IMPORTANT: While continuing to hold Shower Wand in the direction of the tub drain, allow some time for water to begin entering the Filter Housing. When using your System for the first time, allow the System to flush directly into the drain until the filtered water clears. This will remove any fine, black carbon particles left over from the manufacturing process, expel trapped air, and condition the Cartridge for normal use. This procedure should be repeated each time a new Cartridge is installed.

5. Inspect System for leaks at connections. If leak is detected refer to the Caution statement in the Set-up and Installation section of this manual
6. Turn shower "off" and attach the Shower Wand onto Filter housing and align.



TROUBLESHOOTING

Condition:

Water leaks at Collar or Hose connections.

Reason:

Gasket is missing or damaged.

Solution:

Detach connection where leak is present and install or inspect Gasket. If Gasket is damaged refer to Caution statement in Set-Up and Installation section of this manual.

Condition:

A noticeable reduction in the water pressure is detected.

Reason:

Either the Pre-Filter or the Cartridge is plugged

Solution:

Start first by replacing Pre-Filter located at top of Cartridge. If water pressure is not restored, replace Cartridge.

Condition:

System leaks between Filter Housing and Filter Base.

Reason:

O-ring on Cartridge is either missing or damaged.

Solution:

Replace O-ring





Limited Warranty
For Royal Prestige® Brand Products

Royal Prestige
FrescaPure™ Shower Filter
Model FP 2000

Hy Cite Corporation ("Hy Cite") provides the following warranties on its Royal Prestige product line to the original consumer owner of the product, whether obtained by purchase or by gift.

Hy Cite warrants that your Royal Prestige FrescaPure Shower Filter will be free from defects in material and workmanship for a period of 1 year from the date of purchase.

Limitations on Coverage: The Hy Cite warranties cover only normal household use and shall be void if your covered product has been damaged by accident, unreasonably used or misused, abused, neglected, improperly assembled, maintained or serviced, used for commercial purposes, or repaired by unauthorized persons.

Implied Warranties: ANY IMPLIED WARRANTIES WHICH THE PURCHASER MAY HAVE ARE LIMITED IN DURATION TO THE SAME DURATION AS THE WRITTEN WARRANTY DESCRIBED ABOVE FOR YOUR COVERED PRODUCT. Some states do not allow limitations on how long an implied warranty lasts, accordingly, the above limitation may not apply to you.

Warranty Performance: Should your covered product not comply with our warranty, return it to Hy Cite postage prepaid and Hy Cite will, at its option, either repair or replace the product. Hy Cite may replace the product with any equivalent product or with a product incorporating a new technology or design.

Return of Product: To obtain warranty service, return the product to our Service Center:

Hy Cite Corporation
Royal Prestige Service Center
2115 Pinehurst Drive
Middleton, WI 53562
1-800-279-3373

Please **do not return used cartridges** to Royal Prestige unless they become defective or clogged within the 90-day warranty period.

Damage in Shipment: Hy Cite will replace any covered product damaged in shipment free of charge if you notify Hy Cite within 30 days after your receipt of the product. Simply contact the Royal Prestige Service Center. As a condition to replacement, Hy Cite may require you to make the damaged product available for pick-up at Hy Cite's expense.

Purchase Option: If your covered product is damaged by fire or storm, or is stolen, you may purchase new replacement product at one-half (50%) of current retail price. A valid police or fire report is required for discounted purchase.

Limitation of Remedies: No representative or other person is authorized to assume for Hy Cite any other liability in connection with the sale of covered products. Repair or replacement, at Hy Cite's option, shall be your remedy under this warranty and in no event shall Hy Cite be liable for any incidental or consequential damages, losses or expenses. Some states do not allow the exclusion or limitation of incidental or consequential damages, accordingly, the above limitation may not apply to you.

Legal Rights: This warranty gives you specific legal rights, and you may also have other rights which vary from State to State.

For more information on Hy Cite's Royal Prestige brand products, visit our website:
www.royalprestige.com.

*Due to continuing product development and research,
final specification and/or appearance may vary.*



FRESCAPURE™

Exclusively distributed by:
ROYAL PRESTIGE
2115 Pinehurst Drive, Middleton, WI 53562-2528

www.RoyalPrestige.com • © 2008 Royal Prestige • Printed in USA
Reproduction of this printed material is prohibited

1-404-0060